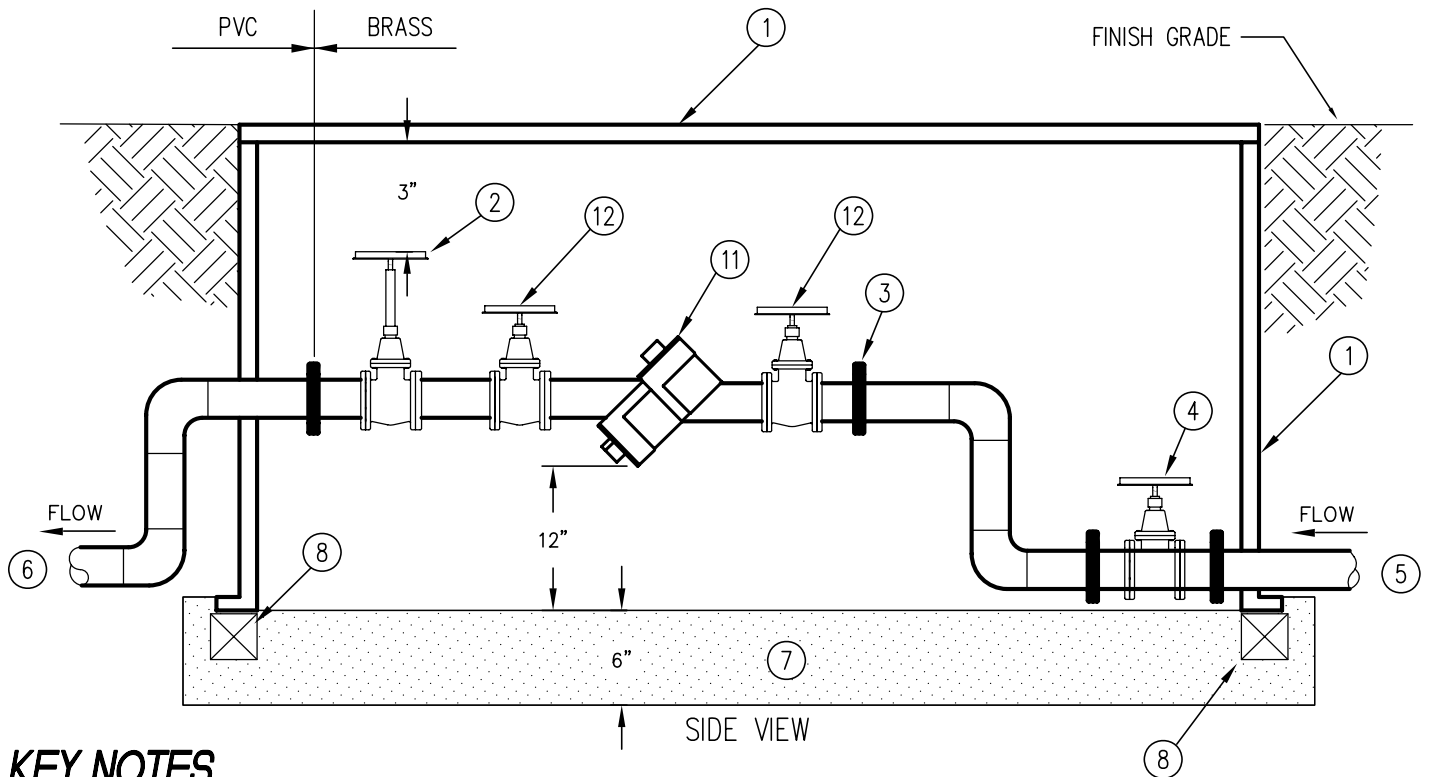


DOUBLE CHECK VALVE ASSEMBLY

NO SCALE

(REQUIRED ON ALL IRRIGATION SYSTEMS)

(RPBA REQUIRED ON ALL CHEMICAL INJECTION SYSTEMS)



KEY NOTES

- ① STANDARD VALVE BOX WITH LOCKING COVER PER SPECIFICATIONS FLUSH WITH FINISH GRADE AND NO CLOSER THAN 12" TO METER BOX. METER AND BOX MUST BE RESTORED TO BE FLUSH WITH FINISHED GRADE AND BOX CENTERED OVER METER
- ② QUICK COUPLING VALVE ON BRASS NIPPLE AND TEE
- ③ BRASS UNION (TYP.)
- ④ MASTER VALVE
- ⑤ MAIN CONNECT FROM METER
- ⑥ MAIN TO IRRIGATION OR OTHER
- ⑦ PEA GRAVEL SUMP
- ⑧ SUPPORT BLOCK (TYP.)
- ⑨ APPROPRIATE CLEARANCE MUST BE PROVIDED
- ⑩ TEST COCKS SHALL BE LOCATED SO AS TO FACILITATE ACCESS
- ⑪ CHECK VALVE
- ⑫ CONTROL VALVE

GENERAL NOTES

- ① BACKFLOW ASSEMBLY SHALL BE A WASHINGTON STATE DEPARTMENT OF HEALTH APPROVED MODEL.
- ② THE BACKFLOW ASSEMBLY SHALL BE TESTED AFTER INSTALLATION AND PRIOR TO ACCEPTANCE BY A CERTIFIED BACKFLOW ASSEMBLY TESTER. ANNUAL TESTING IS REQUIRED THEREAFTER. TEST RESULTS SHALL BE SENT TO FIRGROVE.
- ③ THE BACKFLOW ASSEMBLY SHALL BE CERTIFIED BY FIRGROVE UPON COMPLETION.



FIRGROVE MUTUAL WATER COMPANY