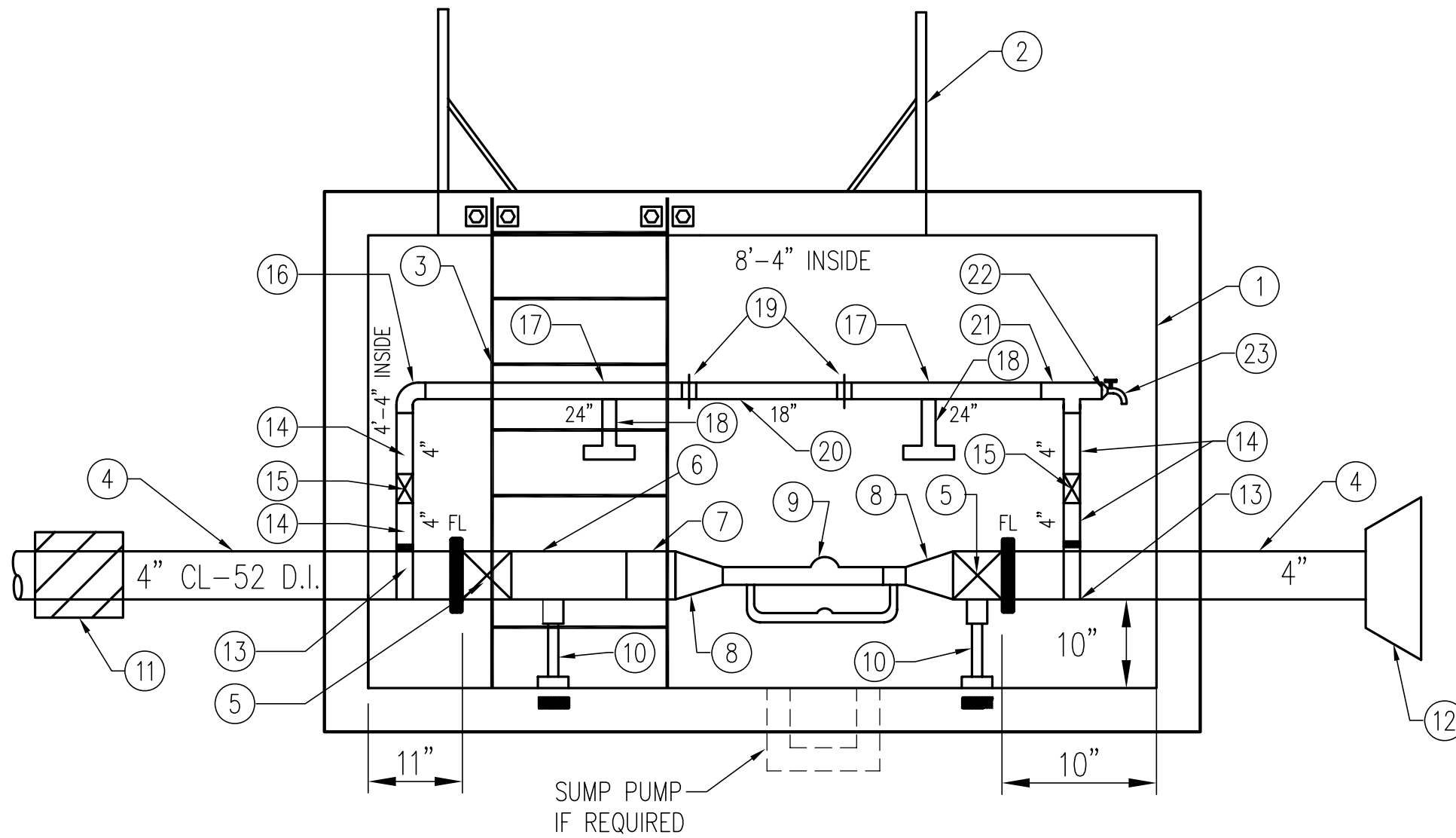


# 3" METER WITH VAULT

NO SCALE



## KEY NOTES

- ① UTILITY VAULT 4484-LA (OR APPROVED EQUAL)
- ② TOP SECTION #4484-TL-2-332P VAULT WITH (2) DIAMOND PLATE HINGED AND SPRING LOCKING STEEL COVER (OR APPROVED EQUAL)
- ③ GALVANIZED LADDER (LADDER UP BILCO LU-4 ALUMINUM)

## MAINLINE

- ④ 5' 4" CL52 D.I. FL X PE (CUT 10' FL SPOOL)
- ⑤ (2) 4" FL GV WITH HAND WHEEL
- ⑥ (1) 4" FL COUPLING ADAPTER
- ⑦ 2'-4" FL BY PLANE END (FIELD CUT TO FIT)
- ⑧ (2) 4" x 3" FL REDUCER
- ⑨ (1) 3" COMPOUND METER TOUCH READ - SUPPLIED BY FIRGROVE
- ⑩ (2) 4" PIPE SUPPORTS
- ⑪ 4" MJ LONG PATTERN SLEEVE WITH MEGA LUGS
- ⑫ MEGA LUG FITTINGS

## 2" BYPASS

- ⑬ (2) 4" x 2" SADDLES
- ⑭ (4) 4" x 2" GALVANIZED NIPPLES
- ⑮ (2) 2" TH X TH BALL VALVES
- ⑯ (1) 2" 90° BEND (ELL) GALVANIZED
- ⑰ (2) 24" x 2" GALVANIZED NIPPLES
- ⑱ (2) 2" PIPE SUPPORTS
- ⑲ 2" UNIONS (FLAT FACE) GALVANIZED
- ⑳ (1) 18" x 2" GALVANIZED NIPPLES
- ㉑ (1) 2" GALVANIZED "T"
- ㉒ (1) 2" x 3/4" BUSH REDUCER GALVANIZED
- ㉓ (1) 3/4" HOSE BIB

FIRGROVE MUTUAL WATER COMPANY

